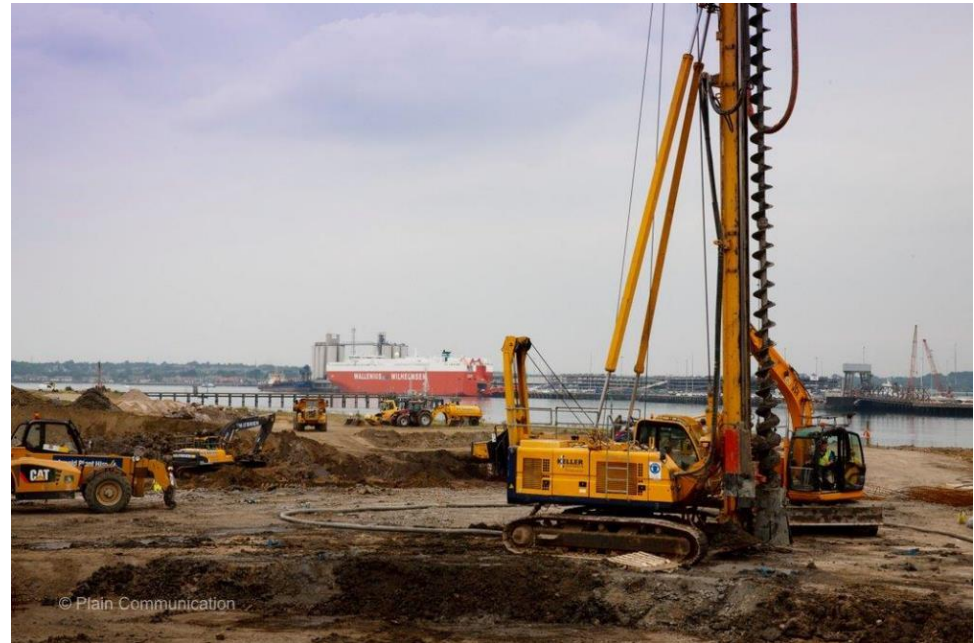


CFA Piling

- All operators must be competent, trained and authorised to operate the equipment.
- A Working Platform Certificate needs to be signed by the client before the rig is rigged up.
- The rig must not be moved without a banksman/Rig Attendant present.
- The Banksman/ Rig Attendant when banking the piling rig must use clear recognized hand signals.
- When rigging up the Rig Driver plus at least one other person must be present.
- Make sure all pins are secured in the mast and tracks.
- When installing the extension bar leave in open position as long as possible while attaching the auger string and always rotate the drill head in a forwards spin direction.
- When putting the hose together always use appropriate clamps and rubbers and secure using a clevis pin.
- When putting together an auger string use a MEWP/ ladder and make sure the auger pins are secure.
- Never let the spoil on the auger go above the cleaner height. If the auger cleaner is not working stop & inform your supervisor.
- Any missing auger cleaner brushes must be replaced.
- If the rig driver leaves the rig he must switch off the engine and take the key.
- When removing auger teeth and auger pins a copper ended hammer should be used.
- Make sure the auger has stopped rotating before opening the gates.

- All lifting gear must be tested 6 monthly and have the correct markings, the right documentation for the lifting equipment must be kept in the rig.
- At the end of all shifts the auger should be positioned on the ground.



Q. What should be in place before rigging up commences?

Q. When removing auger teeth and pins which sort of hammer should be used?

Q. How often should the lifting equipment be tested?