

Spill Control

- Spill Kits should be maintained in and around all locations where Hazardous Materials/Hazardous Waste are stored, handled or disposed of.
- Protect yourself by using your PPE including: gloves, goggles and suits where applicable; and extinguish all cigarettes-SAFETY FIRST!
- Do the Spill Drill -- **REACT!**
- **REMOVE THE SOURCE** – Stop the drip, plug the leak, tighten the joint, replace the part etc.
- **ENVELOP THE SPILL** – Put down a pad or boom to prevent the spill from travelling further

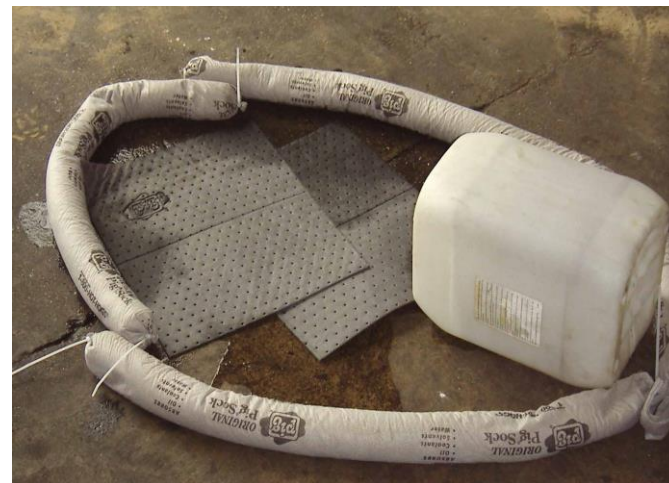


- **ABSORB** – Put down a pad or granules on the spill to absorb it.
- **CONTAIN THE WASTE** – Place used absorbent material into a plastic bag & move it to the correct area or put it straight into the hazardous waste disposal.
- **TRANSMIT A REPORT** – Tell your supervisor what you have spilt and where and what you have done about it. Make sure the spill is logged in the action plan appropriate notification is sent to the HSQE dept.
- By **Reacting** quickly, you eliminate hazards that could cause injury. You also give the spill less of a chance to seep into the ground, which makes clean-up easier and can help to protect water resources.
- For major spills talk through the process of working with the drilling site management and the use of the Environment Agency HOTLINE NUMBER (000-807060)
- Make sure you know where the spill kits in your workplace are located and how to use them.

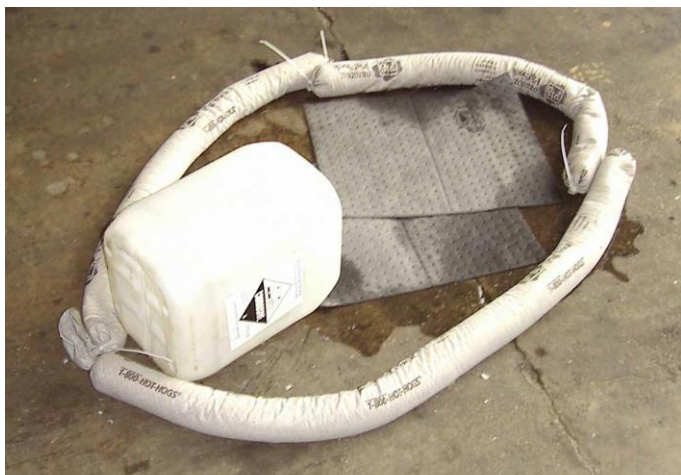
Q. What is the spill drill?

Q. What does A in the spill drill stand for?

Q. Where should used spill kits be put?



Where this is not possible, protect surface water drains and soakaways by using sandbags, mats or other devices. If possible collect/absorb the spillage. (Figs. 2, 3)



Confine the spillage using spill kit materials, keeping liquids away from drains, gullies, foul sewers, surface water and ground water. (Fig 1)

Once a spillage incident has been identified assess the hazard and decide 'IS IT SAFE TO PROCEED?'
If the answer is YES - continue with Spillage Control Procedure as per flow chart.
If the answer is NO - go to emergency action plan as described in flow chart.
Put on suitable Personal Protection Equipment (PPE) if not already done so and inform all necessary staff.
At the earliest possible point, considering all safety aspects stop the source of the spillage or leak.