

HI POTENTIAL NEAR MISS WIRE ROPE DETACHING FROM THE CRANE HOOK



Incident details

During the loading of 12m tremie section into the tremie rack, it was observed the 1m, 10t wire rope sling that was attached between the crane hook and the hopper had detached from the crane hook. This resulted in the tremie section standing upright and only being supported by the rack.

The lifting operation was aborted immediately, exclusion zones were set up and a MEWP was used to reconnect the sling to the crane hook.

Findings

The initial investigation was inconclusive but has found that the spring-loaded securing latch on the crane hook had no defects and the crane hook was fully serviceable (this was confirmed by a weldex fitter).

It was also reported that a similar incident has recently occurred with another FPS member.

A debriefing was undertaken on this event with the site team and members of the management team and various further investigations are being undertaken to understand how this could have happened.

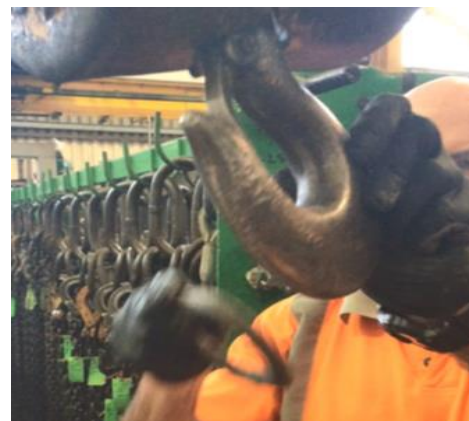
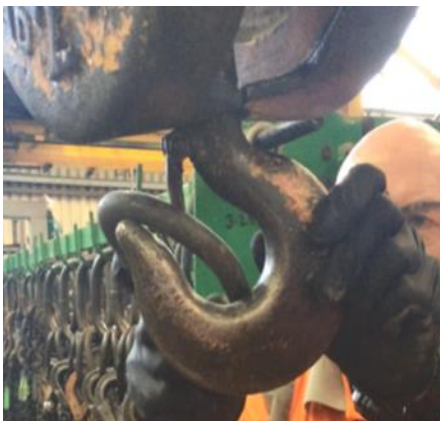
B A C H A T S A F E T Y A L E R T .

A trial was undertaken in the plant yard to try and understand how this event could have happened and they have proven that it is possible for a lifting accessory to come off the crane hook. See details below.

Possible causes of the incident

Possible causes of the incident are:

- The latch became full of grout and stuck open (highly unlikely).
- It is possible the eye has twisted on the hook block, or the block has twisted causing the eye to slide along the hook and force the latch open. This was proven by a trial in the plant yard (See photos below).
- This reality of this situation is this incident can happen to any item of lifting accessory attached to the crane hook.



Recommendations

Following this incident please ensure the following actions are undertaken immediately:

- A thorough pre-use visual inspection and physical check of the latch is undertaken on **all** crane hooks every time you install new lifting accessories. If any faults are found the crane must be stopped, isolated and repairs undertaken before proceeding.
- Always ensure the lifting accessories including the lifting eye, loop on a webbing sling or thimble is sat in the bottom of the hook before lifting or lowering a load.
- As a precaution, the use of 1m 10t wire ropes to lift tremie hoppers or lifting caps **is no longer permitted**. If you only have these on site to lift tremie hoppers and lifting caps, contact the plant yard immediately to arrange replacement.
- As a company standard, all tremie hoppers and lifting caps can only be lifted using 10t lifting chains c/w lifting ring and kidney links (these will normally be 1.5m in length). The long-term plan is to have these permanently fitted with a “Do not remove tag” installed. Once installed, if you are found removing these items, disciplinary action may be taken against you.
- All lift plans and SSOW’s, must be updated with this requirement when tremie pipes are used.
- Ensure the findings contained with safety alert are briefed immediately to all, appointed persons, crane supervisors, and slinger signalers.

If you have any further queries, please refer to your line manager, the plant yard or the Sheq team.