


22/09/20

Health and Safety near miss Kensington Odeon



Incident notification 	Alert 	Information 	Toolbox Talk 
Date and time of incident:	13/08/20 08.30	Injury severity:	n/a
Alert Author:	Susan Gardiner	Potential severity:	Major
HS&W Lead:	Phil Matthews	Investigation Completed:	Low (Initial)
Operating unit:	Cementation	Operational disturbance:	Struck by object (moving, falling or flying)

What Happened?

A pile bore had been concreted the previous day as per the design, to support a plunge column, where concreting had finished at 3pm. An operative was removing the elbow brackets following the standard process. The first bracket was released and removed. While removing the last bolt on the second bracket it was sticking so he tapped it with a hammer. The plunge column dropped into the pile taking the bracket with it. The concrete had not set. There were no injuries.

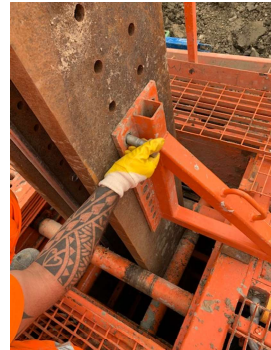
Key Investigation Learning:

The operative/s followed the procedures correctly that were in the project RAMS.

The immediate cause of the incident was releasing the Cemloc elbow / bracket when the concrete supporting it had not set. There was no back up mechanism in place to support the column.

The root cause of the incident was the inadequate quality of the concrete mix. The additives overextended the workability of the concrete. There was no back up method in place to check that the concrete was fully set and could support the column.

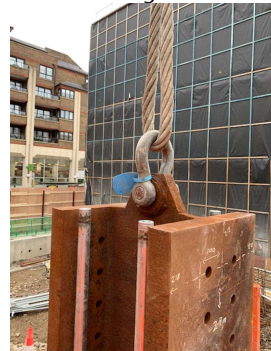
Bracket on CemLoc



Column sank into pile bore



Crane holding column



22/09/20

Health and Safety near miss Kensington Odeon



Incident notification



Alert



Information



Toolbox Talk



OU/Project Specific Learning Points:

The generic RAMS on OWOW for Plunge Columns were reviewed by competent operational team members, and updated to include the following steps prior to releasing the column :

A sample of concrete shall be kept on site in a cube mould/bucket and checked to ensure concrete has set before removing plunge column.

A set of cubes shall be taken and cubes will be broken at the following days 7, 28, 28 and spare with an additional 2 cubes left to be broken the following shift in the morning and another broken at midday to ensure the concrete has reached adequate strength before removing the supports for the column.

The crane shall always hold the plunge column when releasing the trapping elbows from the column.

BU Considerations for Learning:

Ensure risk assessments are carried out and reviewed with competent persons, experienced in the task, regularly, where there is reason to expect that it is no longer valid, or there has been a significant change in the matters to which it relates. ,

Basic Risk Factor:

- | | | | |
|--|---|---|---|
| <input type="checkbox"/> Housekeeping | <input type="checkbox"/> Defences | <input type="checkbox"/> Design | <input type="checkbox"/> Error Enforcing Conditions |
| <input checked="" type="checkbox"/> Procedures | <input type="checkbox"/> Incompatibility of Goals | <input type="checkbox"/> Maintenance Management | <input type="checkbox"/> Organisation |
| | <input type="checkbox"/> Tools/Equipment | <input type="checkbox"/> Training | <input type="checkbox"/> Communication |

Distribution:

- | | | |
|----------------------------------|--------------------------------------|---|
| <input type="checkbox"/> EMT/SMT | <input type="checkbox"/> All OUs/EFs | <input checked="" type="checkbox"/> Originating OU Only |
|----------------------------------|--------------------------------------|---|

Action Required:

- | | | |
|---|----------------------------------|---|
| <input checked="" type="checkbox"/> Brief | <input type="checkbox"/> Display | <input type="checkbox"/> Information Only |
|---|----------------------------------|---|